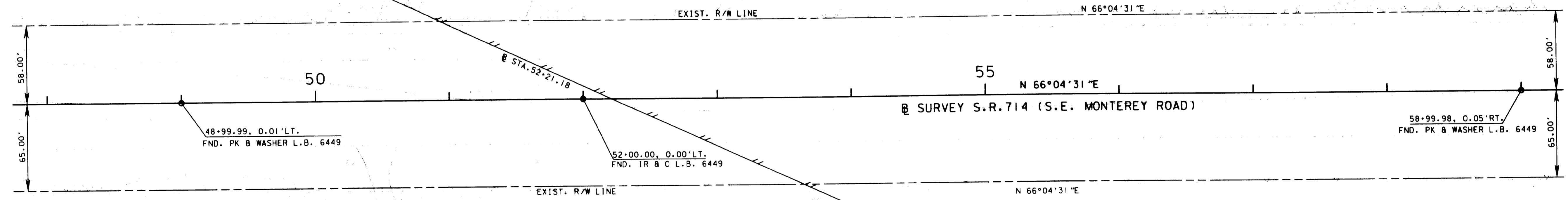
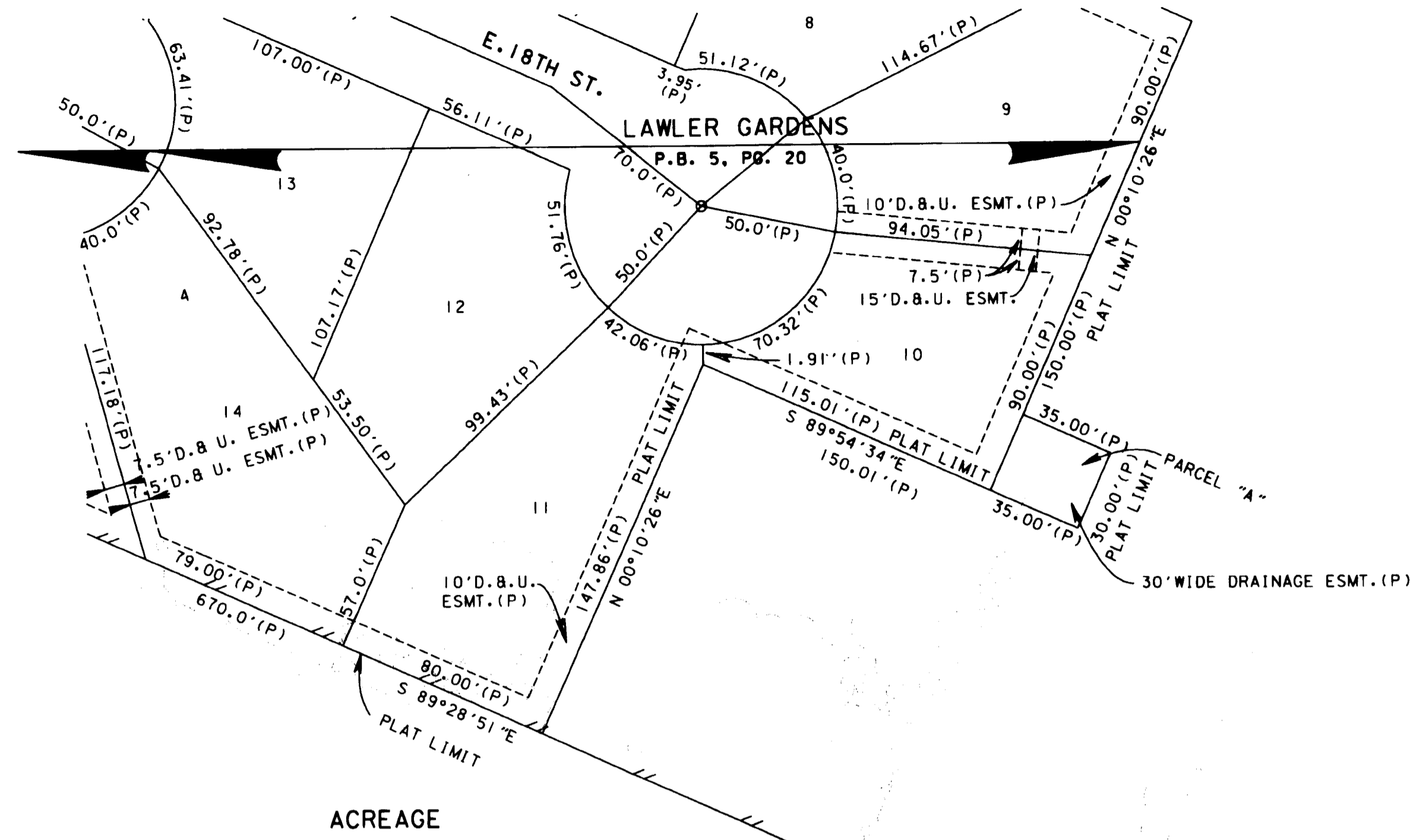
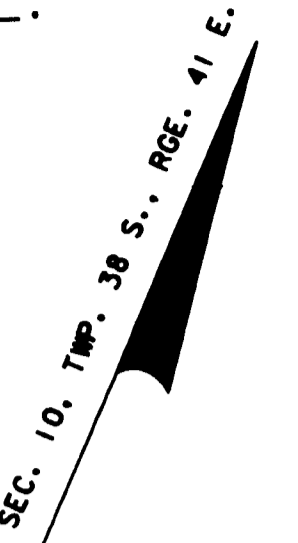


This right of way map when recorded is an instrument of conveyance, transferring in accordance with Florida Statutes 337.29 and 335.0415 all right, title, and interest of Martin County in the road, street, highway, set forth on this map to the State of Florida Department of Transportation.

Recorded in Public Records of Martin County, Florida, this ____ day of _____, A.D. 2010, in Road Plat Book _____, Page _____.

Clerk of the Circuit Court
Martin County, Florida



CITY OF STUART LIMITS
UNINCORPORATED MARTIN COUNTY LIMITS
CITY OF STUART
ACREAGE
MARTIN COUNTY AIRPORT
"WITHAM FIELD"
UNINCORPORATED MARTIN COUNTY

NOT A SURVEY

RIGHT OF WAY MAP

FLORIDA DEPARTMENT OF TRANSPORTATION
RIGHT OF WAY MAPPING

APPROVED BY	DATE								
	08-31-00								
DIST. ADMIN. OF SURVEYING & MAPPING									
REVISION	BY	DATE	REVISION	BY	DATE	REVISION	BY	DATE	

SEE SHEET ONE FOR LEGEND AND GENERAL NOTES

S.R. 714 (S.E. MONTEREY ROAD) FROM S.R. 5 (U.S. 1) TO S.R. A-1-A (E. OCEAN BLVD.)

FED. PROJ. NO. N/A	SECTION 89092-2505	MAPS PREPARED BY	FIELD BOOK NO.'S
		F.D.O.T. DISTRICT 4	4202643
		W.P.I. NO. 4116331	4202644, E.F.B. 228861.ARC
STATE ROAD NO. 714	MARTIN COUNTY	SCALE:	1" = 40'
		ITEM/SEGMENT NO. 2288611	SHEET 5 OF 12